

Stat Fax 3300 Technical Specifications

Photometer

Tube or cuvette -0.2 to 2.5 absorbance units
 With flowcell -0.2 to 3.5 absorbance units
 Stability drift of no more than 0.005A in 8 hours/bichromatic
 Light source tungsten halogen lamp, with lamp saver feature
 Standard wavelengths 340, 405, 505, 545, 580, 630nm plus 2 optional
 Filter types ultra long life multiple cavity IAD hard coat

Sampling

Sample Volume - Flowcell programmable 250 L-750 L
 Flowcell Body surgical grade stainless steel
 Windows Pyrex
 Illuminated volume 21 L
 Minimum Volume - Tube (12mm) 1mL
 Minimum Volume - Cuvette 400 L

Electronic

Processor Z180
 Program Memory 1 megabit
 Non-volatile Memory 1 megabit
 RAM 32k byte
 Internal printer 40/80 column thermal
 Display Graphical LCD 240x128
 Keyboard 20 key, domed membrane
 PC keyboard compatible with standard PS2 keyboard
 Output - RS232 9600 8 data, 1 stop, no parity
 Output - Parallel Any IBM printer with simple ASCII compatibility

Operating Modes

Single and multipoint standardization
 Rate (factor/standard) live graphical display of reaction
 Curve fit linear, point to point, or regression
 Miscellaneous blank and curve recall, sample blanking

Special Features

Password Protection for test results and parameters
 Levey Jennings, patient reports, job creation
 User tests more than 100
 Stored patient results more than 500
 Stored control results more than 500
 Optional external heat block 18 wells, controlled temp @ 37°C
 Optional read cell cooling Peltier cooling system - cell only .
 Selections for 25°C, 30°C, or 37°C.

Enclosure fire retardant ABS and steel
 16" (40cm) x 14.5" (37 cm) x 5.5" (14 cm)*
 *12" - 30 cm tall with screen up
 Weight (17 lbs) 6.4 kg

Power 100-240 VAC (self-sensing) 50/60 HZ input; 90 watts

Stat Fax 3300 Chemistry Analyzer



**Flip-up display
screen**

shown with optional incubation accessory and external keyboard

*Welcome to a new
generation of
Stat Fax*

Stat Fax 3300

View kinetic plots in real time



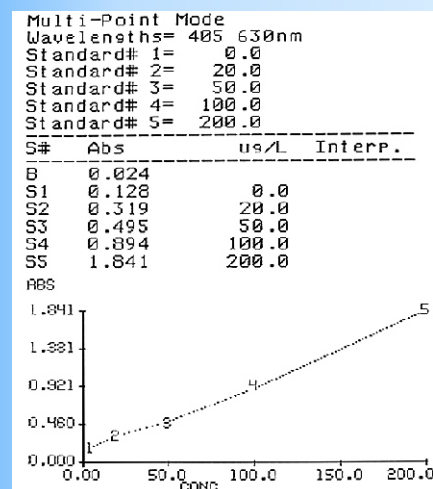
Calculate kinetic results based on the entire read time OR the segment you choose.

Stat Fax 3300 stores patient data

PATIENT REPORT: Capitol Labs
Patient ID: George Brosan
Date Result Interp. Normal Range:
glucose 20/09/02 181.7 NORMAL 60.0 to 110.0
CHOLESTEROL 20/09/02 284.3 ABNORM 120.0 to 250.0
SGOT 20/09/02 28.9 NORMAL 8.0 to 40.0

Create a work list.
Run the tests.
Print Patient Reports.
Output data to:
- On-board 40-column Thermal printer
- External printer
- PC and LIS.

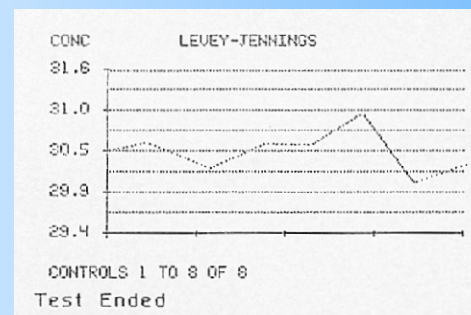
Stat Fax 3300 stores calibrations and standard curves



For each run, choose a new curve or use a stored curve with options to revert to previous curve and to modify multi-point curves.

Stat Fax 3300 stores control values

and offers many QC options to assure linear kinetics and reliable results.



Create Levey-Jennings plots for QC

Optical system temperature controlled to 37°C

Bi-chromatic with 6 filters and spaces for 2 optional additional filters (340-700nm)

Adapts for use with 12mm round tubes, 1cm square cuvettes, or built-in flow cell

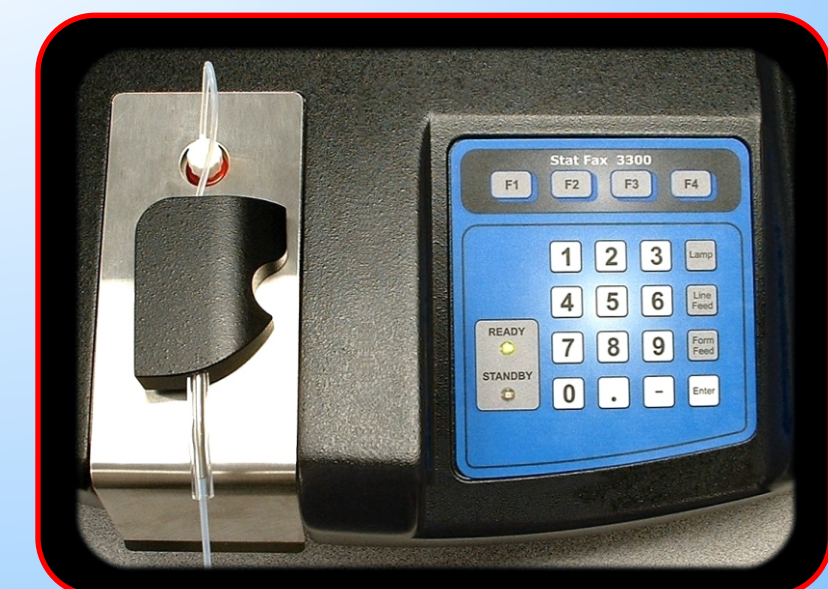
Vacuum system speeds sampling and reduces carryover

Calibration traceable to NIST standard

Use the optional external keyboard for easy entry of patient names and data

Use Redi-Check® to monitor accuracy, linearity, and repeatability the easy way

Peltier cell cooling available as an option



Designed and manufactured by
AWARENESS TECHNOLOGY, INC.
A world leader in semi-automatic
biochemistry analyzers
and other instruments.



<http://www.awaretech.com>

Stat Fax® and Redi-Check® are
registered trademarks of
Awareness Technology, Inc.

Large 240 x128 pixel
graphical display is
easy to view and use